

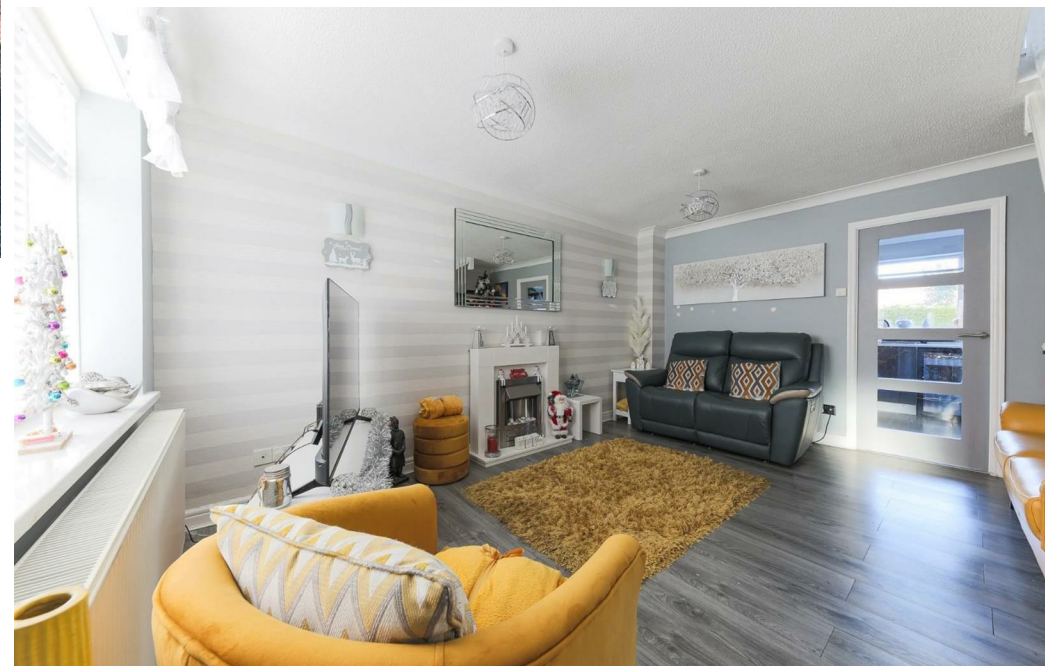
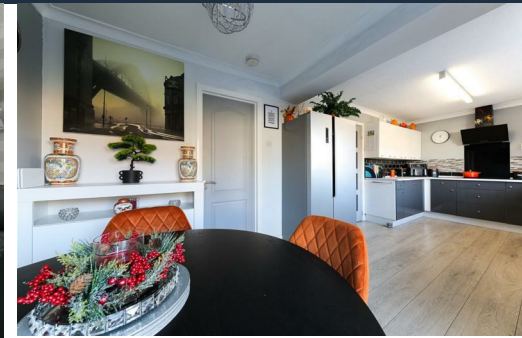


Alexander Hudson Estates

Sales Particulars

Alexander Hudson Estates

Cherrytree Close, NE12



The Property

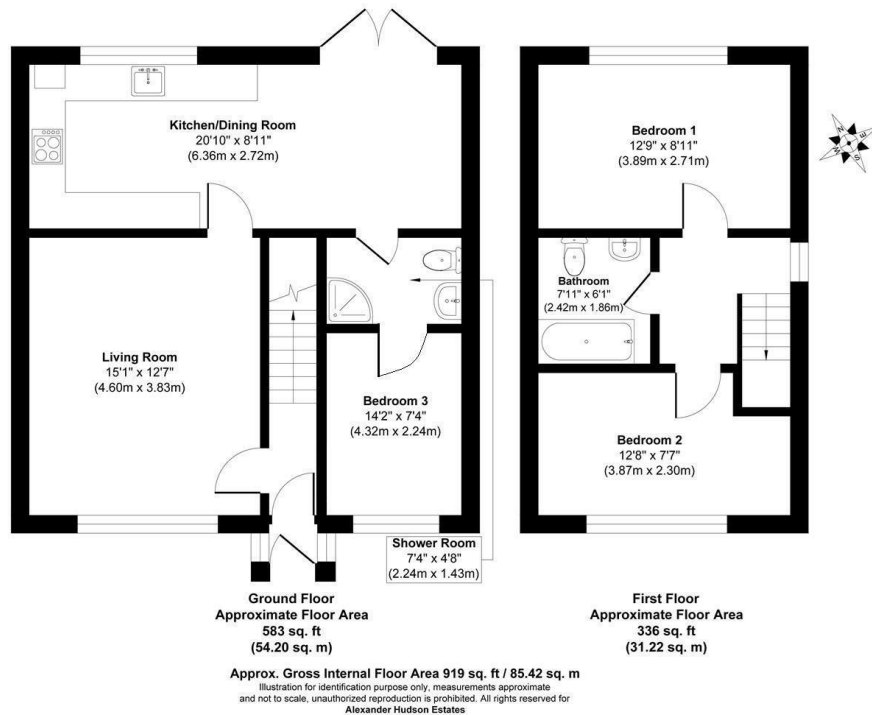
Alexander Hudson Estates proudly presents this beautifully maintained three-bedroom semi-detached home, ideally positioned within the highly sought-after area of Killingworth, NE12.

Immaculately presented throughout, this delightful residence offers versatile living accommodation perfectly suited to modern family life. The ground floor features a welcoming entrance hall with door opening into a bright and airy open-plan living room, ideal for relaxation. To the rear of the living room sits a newly fitted kitchen and dining area, enhanced by French doors that open directly onto the rear garden. A shower room leading into a convenient placed bedroom completes the ground floor. Upstairs, the property offers two generously sized bedrooms alongside a contemporary family bathroom, finished to a high standard with modern fixtures and fittings.

Externally, the home boasts a large driveway providing ample off-street parking, along with attractive front and rear gardens that are beautifully presented and thoughtfully designed for low-maintenance enjoyment.

Killingworth has evolved from its mining heritage into a modern, thriving town. The area offers a wide range of amenities, centred around the White Swan Shopping Centre with supermarkets, local shops, welcoming pubs, and restaurants. Outdoor spaces include Killingworth Boating Lake, local bridlepaths, and nearby nature reserves, providing excellent opportunities for leisure and recreation. Transport links are strong, with bus services to Newcastle and surrounding areas and easy access to the A19 for commuters. Families are well served by schools including George Stephenson High School.

Freehold
Council Tax: B
EPC Rating: 72





Alexander Hudson Estates
The Printworks
20 Arrow Close
NE12 6QN

0191 268 7433
sales@alexanderhudson.co.uk